

# ELEMENT

Kiteboarding



# THANK YOU

Thank you for choosing Element kiteboarding

Our passionate design team perfects and develops kites using the best component.

Our products, including the new Flash model, are crafted in our high-quality facility, ensuring durability, consistent handling, and exceptional performance.



# TABLE OF CONTENT

**3**

WARNING AND PRECAUTIONS

**4**

RELEASE WAIVER OF CLAIMS

**5**

TECHNOLOGY

**9**

PREPARATION

**12**

PACKING

**13**

TAKING CARE OF YOUR EQUIPMENT

# **!WARNING AND PRECAUTIONS!**

**Please read this user guide carefully before flying your kite and follow the procedures described.**

**It should be noted that these safety guidelines are only guidelines and do not claim to cover every possible instance.**

- Kiteboarding can be dangerous. Make sure to get professional instructions before you go kitesurfing.
- Using the product requires you to be responsible for your own as well as others' well-being, which includes informing subsequent users/ owners of your equipment about the risks and responsibilities involved. It is possible to suffer serious injuries or even death if this product is used incorrectly.
- Safety is not only determined by the safety systems on the kite, but also by proper training, and evaluation of all the circumstances: location, potential hazards, other people, weather, etc.  
Choose a kite size based on your skill level and the wind conditions.
- Before you kite, check out the spot. Consider any hazards such as obstacles, shallows, currents, and bans. If an emergency occurs, you need to know if a rescue craft can reach you.
- Never kite near people or obstacles, and always leave at least two line-lengths between you and the downwind line. It is extremely dangerous to kite near powerlines, roads, airports, cliffs, etc.
  - Bars must have emergency release mechanisms that can be opened in an emergency. If you experience an unforeseeable emergency, you can quickly remove your body from the gear by using a quick-release kite leash.
- Lines should only be used correctly to prevent injury to yourself and others. Kite lines can cause severe cuts under tension or even burns if grabbed by the lines.

# RELEASE WAIVER OF CLAIMS

By purchasing our equipment, you agree to be a certified kitesurfer and accept all risks associated with kiteboarding activities, including injury and death. Improper use or misuse of Element Kiteboarding GmbH equipment greatly increases these risks to the user and to third parties. As a user of the Element Kiteboarding GmbH products, you freely acknowledge and accept that you and third parties are exposed to known and unknown risks of injury.

- Under no circumstances shall Element Kiteboarding GmbH or its partners be held liable for personal or third-party injuries, damages or death.

If you have any questions about how to use our equipment, please contact  
([info@element-kiteboarding.com](mailto:info@element-kiteboarding.com))

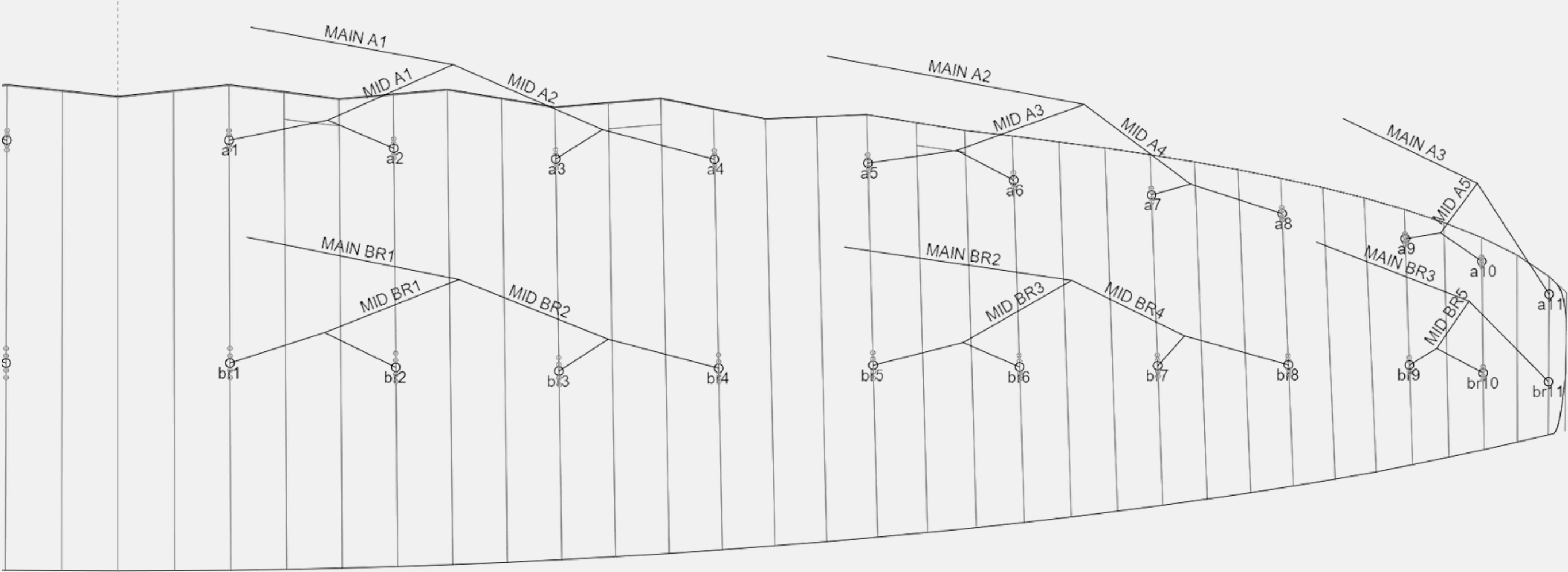
# TECHNOLOGY

## Technical data

SIZE	11	15	19	21
WEIGHT	2.4	3.1	3.6	3.9
ASPECT RATIO	7.4	7.6	7.7	7.7
CELL NUMBER	62	68	68	68
WIND RANGE	15-25	11-19	5-13	5-12

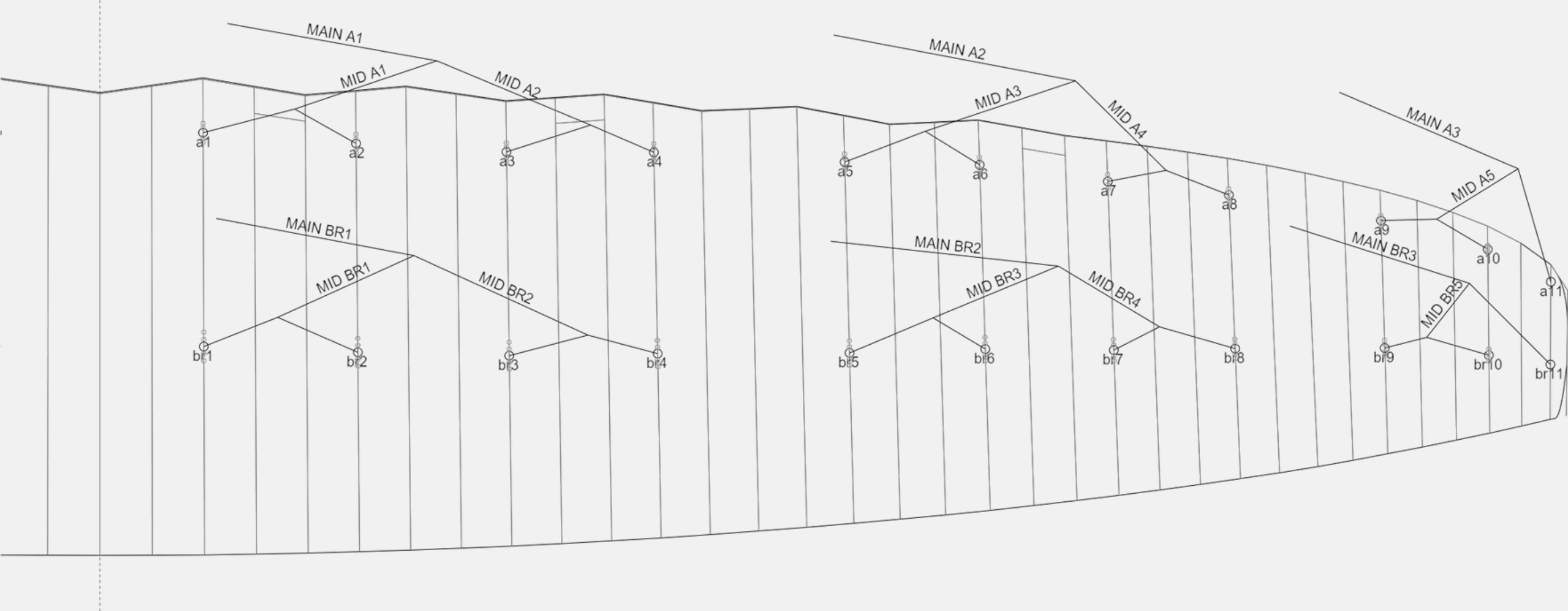
# TECHNOLOGY

Line plan - 11m



# TECHNOLOGY

Line plan - 15m, 19m, 21m





# TECHNOLOGY

## Features

### WATER DRAINING SYSTEM



- To increase the stability and optimize the performance the kite will be delivered with 4 pcs of spinnaker tape .
- If you want to optimize the performance of your kite you can put those stickers on the draining hole on the tips of the kite

### TAB POSITION



- You are looking to optimise the performance or the stability of your kite you can play with the bridle position
- The kite will be delivered with the best compromise performance /stability
- In case of warm / wet / dry condition the position may change

### RIGIDS FOILS ADJUSTER



- In case of creases on your canopy you can adjust the tension of the rods plastic and fiberglass stick

- **!! Be careful if you put this tape the water will not drain !!**
- We are recommending this set up only on the competition use

# PREPARATION

## STEP 1

Check the weather and launching area (wind direction, gust, forecast...)

## STEP 2

Lay the kite 90° to the wind.  
Fold over the wingtip and secure it.

## STEP 3

Make sure that the bridles are free of tangles and that the pulleys aren't blocked.

## STEP 4

Open your bar from the trailing edge side, and connect to the kite pigtails.

## STEP 5

Connect and test your quick-release system

# LAUNCHING

## STEP 1

Close the deflate valve.

## STEP 2

Pre-inflate the kite.

## STEP 3

Connect the bar to your harness.

## STEP 4

Start pulling up the kite slowly.

## STEP 5

When the kite is fully inflated, make sure again that everything is set up properly.

## NEXT STEP



take your board and enjoy the session!

# LANDING

## STEP 1

Find an assistant that can help you land your kite in clear area.

## STEP 2

Instruct your helper to land your kite by catching the wing tip.

## STEP 3

Make sure that the helper is standing at the edge of the wind-window.

## STEP 4

After the helper has caught the kite, walk towards him to release the tension.

## STEP 5

Secure your kite with some sand or anything else that will keep your kite in place and will not damage it.

**\*Dont land your kite without assistance\***

# PACKING TIME →

# PACKING

To ensure the longevity, performance and stability of your kite, it is very important to pack the kite carefully. Fold up the FLASH as shown in the pictures below. With that method of packing, the leading edge is treated carefully, which will increase the kite's life, performance and launch behavior.

## STEP 1

Put the kite on top of the bag.

## STEP 3

Clips the bag.

## STEP 5

Fold the trailing edges cell by cell.

## STEP 7

Store your kite flat.

## STEP 2

Start to fold the kite from one side to the other side hold the A and B attachment point and superpose it on the bottom cell.

## STEP 4

Make sure all the plastic rods are flat and aligned.

## STEP 6

Make sure all the bridles are in the bag and close it.

**THE KITE MUST BE FREE OF SAND AND DRY**

**If the sails are not folded as explained, the kites can lose their guarantee.**

# TAKING CARE OF YOUR EQUIPMENT

- Always carefully inspect all of your equipment before using it.
- Always have a partner when launching and landing your kite.
- Always learn using a small two-line trainer before using a larger more complicated kite.
- Regularly rinse your kite, bridles and pulleys with clean water.
- Do not leave your kite exposed to the sun when not using it. Do not leave your kite flapping in the wind on the beach.
- The speed system and bridle lines will require maintenance just like any high-performance equipment in racing sports. Regularly check the condition of your line connectors, your pre-lines on the bar side, and your lines.
- Never use this product without a safety leash system. A loose kite is extremely dangerous to assistance.
- Should you find any sign of wear, change the defect part without further delay. Most of our spare parts are available on the market. Customers should refer to the product data sheet and to our warnings.
- Use self-adhesive spinnaker tape to repair the kite's canopy fabric.
- Do not dry your kite in the sun and do not store it wet. Pack the kite carefully without damaging the leading edge rods to ensure its longevity.
- In case of showing no respect to our products Element Kiteboarding GmbH is allowed to refuse the warranty (dirty /wet /salty/ not packed according to the user guide/ use it in over power conditions)

Thank you for choosing

**ELEMENT**

See you on the water

[element-kiteboarding.com](http://element-kiteboarding.com)

[info@element-kiteboarding.com](mailto:info@element-kiteboarding.com)